

Chess openings

The first few moves in a game are extremely important. They can have a big influence over who wins and who loses.

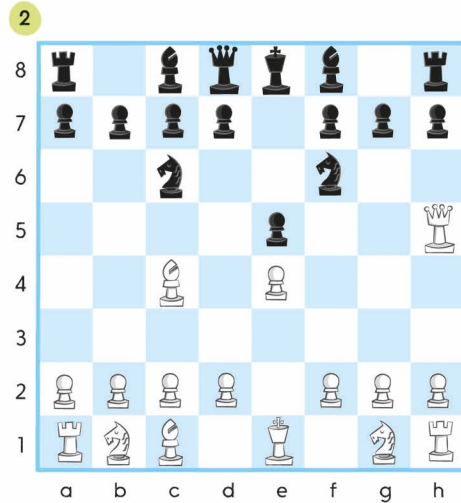
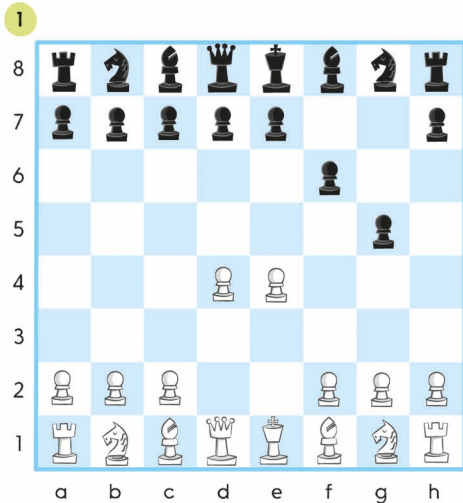
Opening tips

- If you're White, you have an advantage: you move first, so you can create threats that Black has to respond to. Try to hold onto this advantage.
- Take control of the central squares on the board.
- Castle early behind a wall of pawns to protect your king.
- Only move two or three pawns on the middle files.
- Try not to move any piece more than once.
- Develop your knights and bishops – this means moving them out so they're ready to attack.
- Don't bring the rooks or the queen out too early.



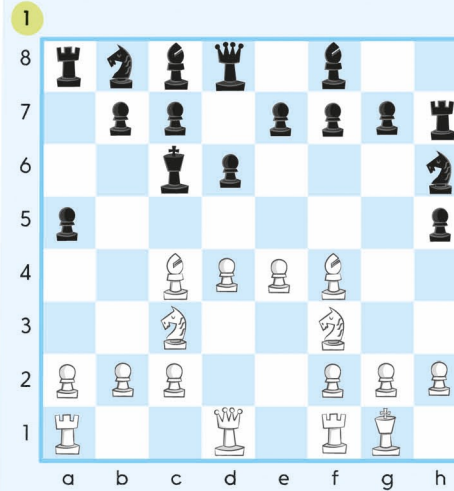
Opening mistakes

It's possible to win a game of chess in the opening. Draw an arrow on each board to show the move White can make to put Black's king in checkmate.

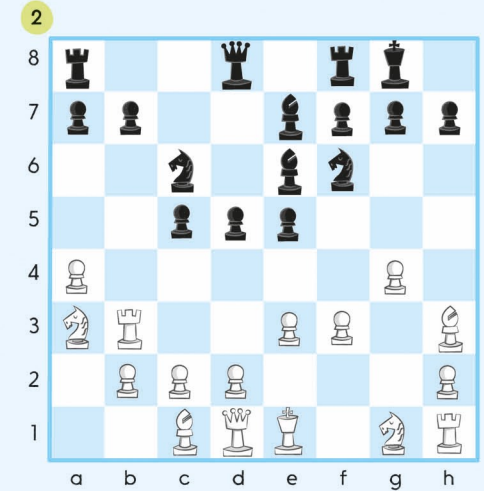


Who's winning?

The boards below show the end of the opening stage in different games. Which player has developed the pieces better? Write Black or White below each board to show who you think is winning so far.



.....



.....

TIP: Always remember to play moves that win valuable pieces and avoid playing moves that lose valuable pieces. This gives you the best chance of winning the game.

